

# TOTAL SOLAR ECLIPSE CHECKLIST



Be totality prepared for April 8, 2024!



## GET PROPER ECLIPSE GLASSES

- Make sure glasses meet the safety requirements.
- Look for the ISO standard label ISO 12312-2.
- Check for any scratches or damage to the eclipse glasses.
- Purchase glasses from a trusted source.
- Questions? Talk to an eye care professional. Use [EyeMed's Provider Locator](https://www.eyemed.com/provider-locator) at [eyemed.com](https://www.eyemed.com) to find an in-network eye doctor nearest to you.



## MAKE TRAVEL ARRANGEMENTS

- Have a parking and viewing location planned out in advance.
- Don't forget to fill up your tank!

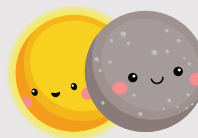


## COMFY CLOTHES, SUNSCREEN, HYDRATION, AND MORE

Phases of partiality can last around 90 minutes total. Make sure you are prepared to be in the sun before and after the totality of the eclipse by bringing a hat, sunscreen, water, and any additional provisions like:

- Bug spray
- Sunglasses for when you aren't looking at the eclipse
- Basic first aid kit
- Cooler filled with water and drinks
- Snacks / sandwiches
- Batteries / Extra wireless phone charger
- Blanket and/or chairs
- Digital watch or cell phone for tracking time

## TOTALITY COOL! THE 5 PHASES OF THE SOLAR ECLIPSE



### PHASE 1

Partial Begins



### PHASE 2

Totality Begins



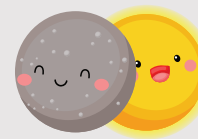
### PHASE 3

Maximum Totality



### PHASE 4

Totality Ends



### PHASE 5

Partial Ends

SCAN ME!

For more  
eclipse info!

