

EXPERIENCE THE TOTAL SOLAR ECLIPSE OF THE SUN

eye Med

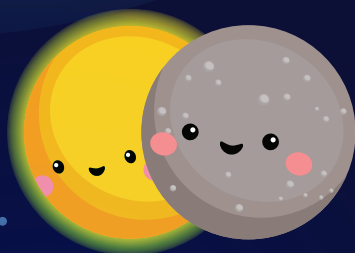
Things to know about this space-tacular event

TYPES OF A SOLAR ECLIPSE



TOTAL

The sun is fully hidden by the moon and casts a shadow over the earth.



PARTIAL

The moon doesn't fully block the sun so only a portion of the sun is obscured. Here the moon appears to take a "bite" out of the sun.



ANNULAR

The moon is centered in front of the sun but doesn't cover the entirety of the surface, so a "ring of fire" shines around the moon.

HYBRID

The rarest solar eclipse, which is a combination of a total and annular eclipse and is produced when the moon's shadow moves across Earth. These begin as one type of eclipse and transition to another.

THE PATH OF TOTALITY



15 states are in the path of totality



The temperature will drop by 10°F to 15°F during the eclipse



This is the first total solar eclipse in the U.S. in 7 years



Totality will last for about 3 to 4 minutes depending on the location in the viewing path

FAST FACTS



WHEN:
April 8, 2024

WHAT:

A total solar eclipse



WHERE:

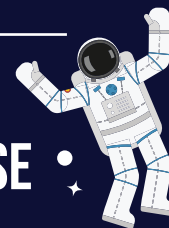
In the U.S. the 2024 total solar eclipse will begin in Texas and end in Maine - reaching approximately 32 million people.

WHAT WILL HAPPEN:

The moon will completely obscure the sun and leave only the faint solar corona, which is known as "Totality".



PHASES OF THE ECLIPSE



PHASE 1
Partial Begins



PHASE 2
Totality Begins



PHASE 3
Maximum Totality



PHASE 4
Totality Ends



PHASE 5
Partial Ends

Citations:

1. "What is a solar eclipse?," Space.com, <https://www.space.com/15584-solar-eclipses.html>, January 2024
2. Carter, Jamie, "10 Strange Facts About The 2024 Solar Eclipse," Farmers Almanac, <https://www.farmersalmanac.com/10-strange-facts-about-the-2024-solar-eclipse>, January 2024
3. Bakich, Michael E., "25 facts you should know about the total solar eclipse on April 8, 2024," astronomy.com, <https://www.astronomy.com/observing/25-facts-you-should-know-about-the-total-solar-eclipse-on-april-8-2024/>, April 2021